

# **Taupo Primary School Newsletter**

## **Wednesday 13 February 2019, Week 3**

### **'Ko te ako te maneatanga' or 'Hooked on Learning'**

Tena koutou katoa,

Thank goodness our classes have settled down with the heat wave moving over. Every year we have strategic goals or learning areas that we need to focus on as a school. Along with this we have a community of learning in Taupo called the CoL that have goals. We aim to ensure that we align with the CoL. The CoL and Taupo Primary work with Ngati Tuwharetoa and their strategic goals and we all align as a community for our people. The CoL will be focusing on writing, oral language and being culturally responsive. These are all areas that we will be focusing on too. Taupo Primary School decided to become a STEAM school with their curriculum back in 2017. We are currently working with a facilitator from the University of Waikato Kay Stevenson on developing our STEAM curriculum (we begun this journey with Kay at the end of term 3 2018). Curriculum review and design will take time to develop. So....

#### **What does STEAM actually mean?**

**S**-Science and Social Sciences

**T**-Technology (food, hard & soft materials), digital tech, coding both plugged and unplugged (for non-digital rooms), robotics, engineering, electronics and maker space concepts.

**E**-Environment (bush school, play based learning, Greening Taupo, Garden to Table)

**A**-The Arts (dance, drama, music, culture, kapa haka, performances)

**M**-Mathematics (problem finding/solving, algebra, stats, measurement etc.)

**Whanau Korero**- this is a great time to share in the mahi or the work we do with your tamaiti or child. We would love all our parents, caregivers, grandparents to attend. We'll leave it up to you whether you would like your child to come too. Please use the online booking to make a time that is suitable for you or pop in to see the office or your child's teacher and we'll get you sorted.

**IEP's**-or an 'Individual Education Plan'. This is a plan we make as a partnership regarding your child's learning. SENCO or Sue Forsyth will be meeting with whanau and teachers over the next few weeks to help make a plan for your child. These are our tamariki who have additional needs. If your child is working well below in two or more areas of their learning then an IEP is what you will need for your child. These tamariki have an IEP with the classroom teacher and you. Your classroom teacher will contact you if your child needs one and our Whanau Korero hui coming up is a perfect time to let you know if we need an IEP.

*I have had a common question asked recently by a number of whanau "why do you have year 3 and 4 children together or, 5 and 6 ?".*

**Differentiated Learning**-this is an approach that we use in New Zealand schools. Composite classrooms is where we have two groups of learners in one room for example, year 1 and 2 learners in a room. Each teacher is required to plan according to each child's level of learning. Then we group levels of learners together accordingly in a room. Your child will be having their learning needs planned at their level. These are checked regularly by team leaders and the

leadership team. Research has shown that children who are taught in mixed ability groups have higher outcomes. We aim for high outcomes!

**Room 20-** Unfortunately, Mrs Bothamley is unable to continue teaching on Thursday and Friday in room 20. Mr Andrew Thomas will be replacing her in room 20. We did hope to have this sorted before school started but we believe it was worth the wait for Mr Thomas! Our kids love him already. Andrew has been in this week and will start next Thursday. Please feel free to come in and say hi and introduce yourselves. You'll most likely to see him taking sports and science which he loves! Both Mr Thomas and Mrs Webster will be at your Whanau Korero hui.

**LOCKED GATE-** Ruapehu entrance gate will be locked for a period of time from the 18th to 28th of February starting next week. The fencing which is rotten along there will be replaced to match the remaining metal school fence. Apologies, for any inconvenience this may cause you. This is to meet the health and safety requirements and minimise any risk.

**Kelly Club Before and After School Care at Taupo Primary School-**Our programme provides a great mix of activities for kids to get involved with including, sports, games, arts and crafts, baking and cooking, science and discovery, along with structured free play after a long day at school. We have a great team of staff who are all teacher aides at Taupo Primary School led by Helen Sherrock, so there will be lots of familiar faces for the kids. To book into our programme please visit [www.kellyclub.co.nz/taupo](http://www.kellyclub.co.nz/taupo) or phone **021 195 0139** for further details. Our wonderful staff are also available to collect your child from their room at the end of the day so you know they get there safely. Please let us know if you would like your child collected from their room, anything to help. We look forward to seeing you!

**Available Sessions:**

Beforecare - Full Session (7:30am to 8:30am)

Aftercare - Half Session (3:00pm to 4:30pm)

Aftercare - Full Session (3:00pm to 6:00pm)



Apologies whanau for the change in dates regarding the year 4-6 Athletics day this has come about with the change in the inter school dates which were pushed out further. This is great for our kids, they'll be able to get more practice in. You can find all the dates at the bottom of the newsletter in **UPCOMING EVENTS** below.

**Buses-**There is a large amount of outstanding bus fees from last year. Bus fees for term 1 will need to be paid by **Friday 15th March**. After this students will not be allowed to catch the bus until the fee has been paid. Moving forward bus fees will be due in the first week of each term. Apologies, we need to take a hard line on this due to the amount of monies outstanding in 2018.

**Extra Curricular-**these are things that you wish to place your child in and have a cost added (skiing, sports hockey/netball etc). Last year there were a number of outstanding fees not paid. Some outstanding extracurricular fees are upwards of \$300 for a child. If you have extra curricular fees outstanding still you will need to pay these in order for your child to attend extra-curricular this year. We are taking a hard line on this too. If we have 10 people owing \$300 this means we are paying \$3000.00 which comes from all our children's monies. We would rather put this money towards purchasing P.E. equipment, technology and science resources for all, we are taking this away to pay these outstanding monies owed.

Our **school values** are Aroha, Manaakitanga, Kotahitanga and Whanaungatanga. Each week we learn and focus on one of these core values in our school. Next week we'll be focusing on the value...**Aroha**. This value is about showing compassion and empathy to others. Displaying care and concern for others in our classroom or playground. Most importantly fostering a love of what we do and being '**HOOKED ON Learning**' whether that is sports, academic or giving things your best go.

**Whakatauki (proverb) of the week...**

***Aroha mai, aroha atu***

***Love received demands love returned***

Nga mihi nui  
Sarah Sade  
Acting Principal,  
Taupo Primary School

## **Upcoming Events**

Board of Trustees Meeting, Tuesday 19 February 6.00pm in the staffroom  
Whanau Korero, Wednesday 27 February and Thursday 28 February  
Senior school athletics all Year 4-6 students Thursday 7th March  
Winter Sports Registrations-Thursday 7th March at TPS  
Interschool Athletics Thursday 28th March  
Swimming starts for Rooms 2, 3, 6, 8, 9, 11 on 4 March, cost per student \$20  
End of Term 1, Friday 12 April 2019

## **Assemblies**

We would love you to join us at our assemblies. Each week we have a different class hosting our assembly. All welcome this includes extended whanau. Assemblies start at 9.10 am and finish at around 9.45 am every Friday. Please see below for rooms hosting this terms assemblies.

Week 3 Room 21  
Week 4 Room 20  
Week 5 Room 19  
Week 6 Room 18  
Week 7 Room 17  
Week 8 Room 16  
Week 9 Room 15  
Week 10 Room 14  
Week 11 Room 13



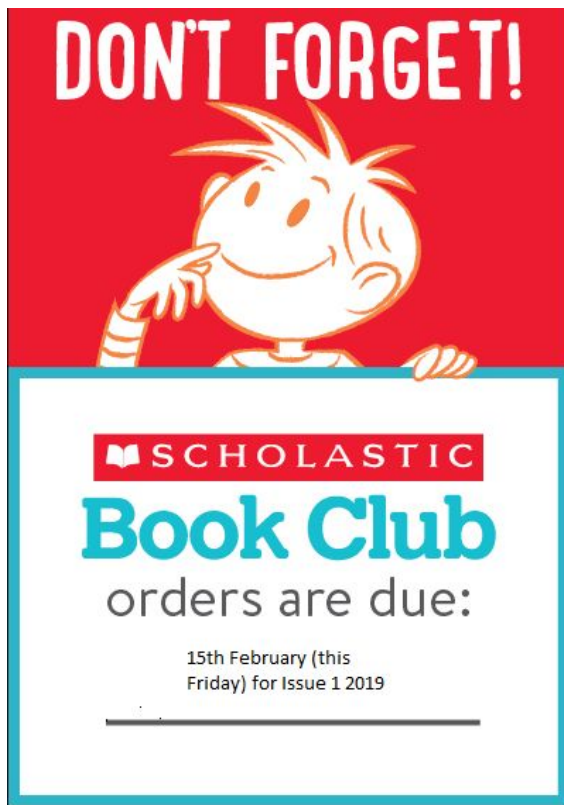
**Thanks Mrs Watson and Room 18 tamariki who designed our new flag!**

### **Uniform Swap - School Hall - 2.45pm to 3.15pm Monday 18 February**

Next week (Monday 18 February) one of our lovely parents will start back with our Uniform Swap. You can bring in uniform to swap or just come along and pick up some uniform pieces (size dependent on what is available) in the school hall foyer. There is also other clothing/footwear available for families.



We would like to welcome our new students  
Elias, Keira, Lucas, Nikau, Orlando and  
Savannah to Taupo Primary School







## Taupo RC Car Club

Taupo RC Car Club is for all ages and all cars. We are about building community and family spirit. No one is excluded, and everyone is welcome to come and watch or have a go. The off-road track is located at the entrance to Spa Park, Taupo.

There are *fun days* (drag races, tug of war, sausage sizzle)  
**Wednesday evening sprints** (5:30pm – 8:00pm light permitting)  
**Championship points day** (one Sunday a month).

We have a timing system that records your lap positions and times.

To race in the monthly Championship Points races you must be a club member and have a timing transponder.

### Membership Fees

Single: \$30  
 Family: \$50  
 (2 Adults and 3 Children)  
 Transponder Buy: \$40

### Track fee for Points day

Single: \$5  
 Family: \$10  
 (2 Adults and 3 Children)  
 Transponder Rental: \$5

Further details, videos, pictures, event dates and times at

<http://facebook.com/tauporccarclub>

Or contact us by Email at [trccc2017@gmail.com](mailto:trccc2017@gmail.com)

# TAUPŌ 2019 IRONKIDZ TRIATHLON

WAIRAKEI ESTATE 20<sup>th</sup> ANNIVERSARY





## swim bike run

### WAIRAKEI ESTATE IRONKIDZ TAUPŌ 2019 TRIATHLON

**Sunday 24th February 2019**  
 A fun triathlon for 7 to 15 year olds



**Elite Category**  
for more serious athletes



**Splash & Dash**  
for 5 to 7 year olds

[www.ironkidz.com](http://www.ironkidz.com)

proudly supported by









**Please note (Ironkidz): A late entry fee of an extra \$10 starts from Monday 18th of February and t-shirts cannot be ordered from this date so enter as soon as possible.**



## The Developing Brain

Waipahihi Primary School, Taupo  
 Wed 26 Feb 2019 - 7:30pm - 9:00pm  
 Tickets at [Eventfinda.co.nz](http://Eventfinda.co.nz)



#ontheroadagain

Host of the TV documentary "All in the Mind" and cohost of the TV series "The Secret Life of Girls", renowned Neuroscience Educator, Nathan Wallis stakes his talk "The Developing Brain" on the road and is coming to a town near you. In his unique "tell you how it is" style, Nathan Wallis provides an informative narrative on how our day to day interactions with children and young people, significantly the younger years, plays a critical role in defining later outcomes for our children and for our future. Don't miss this opportunity to hear Nathan Wallis speak.